



BENEDRIVE GROUP

New Energy Vehicle Charging system solution



BENEDRIVE INTERNATIONAL CO., LTD.
ADD: FLAT/RM 15B 15/F CHEUK NANG PLAZA 250 HENNESSY RD, HONG KONG
SHENZHEN BENEDRIVE TECHNOLOGY CO., LTD.
ADD: C402, KingDao Science Park, ChuangYe RD, ShiYan Town, 518108, BaoAn Dist., ShenZhen, China
TEL: +86 156 02901287 (Mobile / Wechat)
+86 755 23290071
FAX: +86 75523290072

E-mail:
sales@benedrive.com

Online talk:
QQ: 363398022 (wechat account)
Social: Linkein: info@benedrive.net










BENEDRIVE New Energy provides you with better charging service



BENEDRIVE ONLINE CATALOGUE



Content

	Company Profile	01
	Charging Management Platform	07
	DC Charging Station	09
	AC Charging Station	11
	European Standard Charging Pile	13
	Product Application Scenario	15
	Partners and Projects	23

					
国家级高新技术企业 National High-tech Enterprise	广东省守合同重信用企业 Guangdong Province, Abiding By Contract And Credit Enterprise	中国中小企业诚信示范单位 China SME Integrity Demonstration Unit	AAA企业信用等级认证 Aaa Corporate Credit Rating	深圳市自主创新百强中小企业 Shenzhen Top 100 Independent Small And Medium Enterprises	
					
TUV认可实验室 TUV Accredited Laboratory	UL认可实验室 UL Accredited Laboratory	ISO9001质量 管理体系认证 ISO9001 Quality Manage- ment Certification System	ISO14000环境 管理体系认证 ISO14000 Environmental Man- agement Certification System	OHSAS18001职业健 康安全管理体系认证 OHSAS18001 Occupational Health and Safety Management System Certification	GB/T 29490-2013知 识产权管理体系认证 GB/T 29490-2013 Intellectual Property Management System Certification
					中国人保财险

Production Process

Test Equipment

Hardware processing

- CNC lathe
- CNC machining center
- CNC punching machine



Sheet metal processing

- CNC shearing machine
- CNC bending machine



Spray processing

- Electrostatic dusting process
- Welding process



Assembly processing

- Accessory processing area
- Assembly processing area



Production processing

- AC charger processing area
- DC charger processing area



Inspection test

- Charging pile function test
- Charging pile fitting test



Surge test equipment



Environmental test equipment



Reliability test equipment



Safety inspection equipment



Test Report



AC charger pile test report



DC charger inspection report

Come into us

R & D Capabilities



BENEDRIVE insists on independent research and development, adopts an open architecture, decouples key functions, multiple fault-tolerant designs, etc. At the same time, it has also formed many valuable invention patents in the field of charging. Among them, the DC charging pile can be perfectly compatible with charging modules such as Huawei, ZTE, Inkray, McGemett, and Yonglian. According to the application scenario, the AC charging pile launches multiple products of plug and play, offline operation, and network operation, to provide charging operators with high, medium and low optional solutions.

BENEDRIVE insists on partnering with customers in the new energy field and long-term cooperation to achieve mutual benefit and win-win results. It supports solution-level in-depth ODM cooperation for customers, and also provides customers with various degrees of OEM cooperation, from charging operation platforms to charging terminals. From software to hardware, etc., it helps customers obtain more valuable services in all aspects.

Win-Win



R & D patent



Global sales and service network platform

Global service platform to support global sales, can provide the world's 7 x 24h corresponding services



Product accessories and Management platform



BENEDRIVE has a separate charge pile platform (Smart Power Station), in the country, to monitor street-level charging pile stock data, the new data, real-time / cumulative charging data, and support for one key export related data and document; platform compatible with all operating systems.



Platform Interconnection

- Promote the common development of charging industry chain
- Interactive platform docking to promote high-speed integration of Internet of vehicles
- Support docking with local government platforms to ensure subsidy application
- Connect with mainstream platforms and expand charging business

Efficient Operation Management

- The real-time payment of funds ensures the safety of assets and improves economic benefits
- Data graphic list management, the construction of intuitive data model
- Multi dimensional data analysis of capital flow, electricity quantity and order

Safer Charging

- 24-hour all-round real-time monitoring, dynamic scheduling of charging power, to ensure the safe operation of the station
- 24-hour all-round real-time fault monitoring, automatic inspection, improve the efficiency of operation and maintenance management
- Self configuration of sub account permissions
- Unique financial management system and profit sharing system make financial management more transparent

Cloud platform feature list

Module	Menu Group	Menu Name	Function Description
Operation Management	Billing pricing strategy	Pricing Strategy	Set the external pricing strategy of the charging station. The formulated pricing strategy supports the setting of version, cycle and other methods.
		Discount strategy management	Add, view and maintain discount strategy information, and associate and bind the maintained discount strategy, including specifying customer groups and setting power plant ranges.
	Member Management	Member Management	Unified management for APP members, WeChat members, Alipay members, and charging card members.
		Member group management	Different member groups can be set according to operational needs, and different discounts can be set for different member groups.
	Power station operation	Charge record	This function is used to count all charging order information, including charging orders and completed orders, and also supports filtering out abnormal orders for analysis.
		Power plant management	Newly build, edit, adjust and manage the basic information of the power station, and support the maintenance of the operation information of the power station.
		Charging pile management	Online management of charging piles in the station.
		E-voucher issuance management	Used for personal or corporate issuance of vouchers.
	Electronic coupons	E-voucher issuance review	Used to review the issuance of vouchers.
		Billing management	Invoicing application
Invoice management	Used to view and manage billing record data.		
Monitoring scheduling	Station monitoring	monitoring platform	The layout of the charging station is displayed through a map, and the overall data of the power station is displayed.
		Overview of the power station	You can view the basic information of the power station, the summary data of the power station, the real-time status of the power station terminal and other information.
		Power station real-time monitoring	Monitor the real-time data of the power station, and graphically display the real-time parameters of each charging terminal.
Statistical Analysis	Business analysis	Power plant data analysis	Including daily trend analysis of charging times, daily trend analysis of charging power this month and last month, daily trend analysis of charging time this month and last month, and charging utilization analysis.
		Terminal status details	Provide terminal status detailed statistical reports, including terminal number, name, status, status change time, charging power, etc.
	Operation and maintenance statistics report	Power plant failure rate	Provide power station failure rate statistics report, including power station detailed information, operating company detailed information, terminal detailed information, number of failures, failure rate, etc.
		Charging failure record details	Provide a detailed statistical report of charging failure, including order number, status, device information, user information, charging duration, time, etc.
		Equipment failure information	Provide equipment failure information statistics report, including terminal number, name, failure status, failure occurrence time, recovery time, duration, etc.
		Power plant historical data	Statistics show the basic information of the power station and historical order data. And can do daily trend analysis of charging capacity, daily trend analysis of charging time, daily trend analysis of utilization rate.
		Operating power station utilization	View the charging utilization rate of operating power stations. Including time utilization and power utilization, etc.
		Operating terminal utilization	View the charging utilization rate of the operating terminal, including time utilization and power utilization, etc.
		Charge record peak and valley information	According to the operating company, power station name, charging start time, charging end time and other dimensions, statistics of the total power and total electricity costs in each time period of peak and valley.
		Financial System	Financial Management
Account recharge details	This report is used to display the detailed information of all recharge records.		
Account refund details	Query refund information for all accounts.		
Personal recharge management	Manage personal recharge orders.		
Personal refund management	Manage individual refund orders.		
Enterprise recharge refund	Operators can use this function to process recharge and refund applications for corporate accounts, and complete recharge and refund operations based on the results of the application.		
System Management	System Management	Enterprise recharge management	Manage corporate recharge orders.
		Enterprise refund management	Manage enterprise refund orders.
Merchant Information Management	Manage and maintain platform user permissions under merchants.		

DC EV Charger Series

Product Appearance / Features / Function Parameters



BENEDRIVE car charging products are mainly divided into national standard DC, national standard AC, European standard DC, European standard AC and other standard charging piles, and supporting software products. Haipengxin charging pile products adhere to quality assurance and establish a national after-sales service network to ensure charging services with better products + services. The national standard charging pile products are widely used in domestic bus charging stations, taxi charging stations, public parking lot charging stations and residential supporting charging stations, and have been well received by the majority of car owners and friends. European standard and Indian standard charging products have also been applied in batches in many countries such as South and Southeast Asia.

- ◆ The full range of constant power charging systems provide more competitive charging services for large and small new energy vehicles.
- ◆ Support charging card, APP, official account, small program and so on.
- ◆ It has the functions of over-voltage, over-current, output short-circuit, battery reverse connection, abnormal insulation, leakage, internal over temperature, key device status and other monitoring and protection functions, as well as charging overcharge protection.
- ◆ BMS voltage adaptive.
- ◆ It is suitable for all kinds of new energy electric passenger vehicles and new energy commercial vehicles, such as electric buses, electric buses, taxis, new energy network Hailing vehicles, environmental sanitation vehicles, electric clay vehicles, new energy special vehicles, etc.
- ◆ Intelligent power distribution, dynamic response to vehicle demand.
- ◆ The equipment is easy to install and handle, and occupies a small area, which is suitable for centralized station and decentralized deployment.
- ◆ Open architecture design, support access to customer operation platform, support access to intelligent parking lot and stereo garage management system related equipment.

Product series parameters



Product categories	Mobile DC charging pile: 20kW
	Wall-mounted DC charging pile: 15kW, 20kW, 30kW, 40kW
	Floor integrated DC pile: 30kW/40kW, 60kW/80kW, 120kW, 160kW, 180kW, 240kW, 180kW、240kW。
	Split charging stack: 120kW (1 tow 2), 160kW (1 tow 4), 240kW (1 tow 6), 320kW (1 tow 8), and other specifications
Output voltage range	200~500VDC、200~750VDC
Maximum output current	0~250A
Display type	7 inch touch screen, 10 inch touch screen, etc.
Display content	Charging voltage, charging power, billing information, fault information, battery information, user information, historical data query, local administrator settings, etc.
Cooling Method	Natural cooling, intelligent air cooling
Product categories	IP54, insulation resistance ≥ 10 megohms, withstand voltage rating: 2500VAC
Auxiliary power	12V/10A, optional 24V, dual power system automatic adaptation
Charging module	Delta, Huawei, Incore, Megmeet etc.
Length of charging gun	The net length of the outlet is 5 meters by default, and the length can be customized
Networking method	Wired Ethernet networking is adopted by default, and wireless 4G networking can be configured according to customer needs.

AC EV Charger Series

Product Appearance / Features / Function Parameters



The AC charging pile designed by Haipengxin is mainly used in public buildings, residential parking lots or charging stations. The product adopts conduction mode to provide AC charging interface for electric vehicles. This product integrates charge interface, control unit, communication, billing and other components into a whole, it adopts modular design, with the feature of convenient installation and debugging, simple operation and maintenance.

- ◆ Support payment by charging card, APP, official account, mini program, etc.
- ◆ All series of products are equipped with leakage protectors, door opening detection, etc. to ensure charging safety.
- ◆ Open architecture design, support access to customer operation platform, support access to related equipment of intelligent parking lot and stereo garage management system.
- ◆ A full range of modular architecture, functions can be added or subtracted, with a more economical solution to quickly realize the needs of different scenarios.
- ◆ Provide a variety of sheet metal shell and plastic shell product options, and support customized development, to provide customers with the most competitive solutions.
- ◆ The monitoring unit has complete data management functions, which can realize complete data storage, alarm storage and data query functions.
- ◆ Flexible installation scenarios, support wall-mounted installation, and can also be equipped with a column to achieve floor-to-ceiling installation.

Product Series Parameters



Product categories	National standard wall-mounted AC charging pile (sheet metal shell): 3.5kW, 7kW, 21kW
	National standard wall-mounted AC charging pile (plastic shell): 3.5kW, 7kW
	National standard advertising floor type AC charging pile: 3.5kW, 7kW, 14kW (dual gun)
	Floor-standing AC charging pile: with AC pile standard column to achieve floor-standing application
Input/output voltage	220VAC (L+N+PE) /380VAC (3W+N+PE)
Output current	0~16A、 0~32A
Display type	4.3 inch touch screen
Display content	Charging voltage, charging power, billing information, fault information, user information, historical data query, local administrator settings, etc.
Protection level	IP54 (sheet metal shell)/IP55 (plastic shell)
Length of charging gun	The net length of the outlet is 5 meters by default, and the length can be customized
Networking method	Wired Ethernet networking is adopted by default, and wireless 4G networking can be configured according to customer needs.

AC EV Charger Series

Product Appearance / Features / Function Parameters



Product Series Parameters



BENEDRIVE can quickly customize and develop intelligent, efficient, safe and reliable charging equipment (including European standard CCS DC charging pile, Japanese standard CHAdeMO DC charging pile, European standard AC TYPE2 charging pile, American standard AC charging pile and Indian standard charging equipment, etc.).

Power Input	Input Rating	380V ac, 50Hz 3-phase(3W+N+PE)
	Power Factor	≥99%
	Efficiency	94%
Power Output	Output Rating 1	200~750Vdc, 100A maximum, 180kW
	GBT	maximum
	Output Rating 2	200~750Vdc, 100A maximum, 150kW
	CCS combo2	maximum
	Output Rating 3	230Vac, 32A maximum, 7.4kW maximum
	Type2	
Auxiliary power supply	12V/10A	
User Interface	Display	7" LCD touch screen
	Support Language	English, other languages optional
	Charging Interface	CCS Combo2 + GBT+ Type2, with cable and plug
	Communication Interface	LAN, 4G(optional)
User Authentication	RFID default, OCPP1.6J optional	
Environmental	Operating Temperature	-20℃ to +50℃
	Storage Temperature	-40℃ to +70℃
	Humidity	5%RH to 95%RH
Mechanical	Ingress Protection	IP54
	Cooling	Forced air
	Cable Length	5m ± 0.1
	Packing Dimension	850*1000*2000mm (reference size)
	Gross Weight	350Kg

Product Category	According to the number of output interfaces: single-phase charger, three-phase charger.
	By operation mode: offline operation version, network operation version.
	And other categories.
Protocol Standard	AIS138, OCPP1.6-JSON, etc.
Input / Output Voltage	230VAC (L+N+PE) /400VAC (3W+N+PE)
Output Current	0~16A
Display Type	4.3 inch touch screen, 7 inch touch screen
Display Content	Charging voltage, charging power, charging information, fault information, user information, historical data query, local administrator settings, etc.
Protection Level	IP54 (Sheet metal shell)
Networking Method	Wired Ethernet networking is used by default, and wireless 4G networking can be configured according to customer needs.

Cooperation project application scenario

Bus Station Application



Xinzhou Bus Charging Station

The new site is a dedicated charging station built for Shanxi Xinzhou Bus in July 2016. The charging station uses 120 KW high-power fast charging, which charges buses during the day and night to ensure smooth travel of citizens!



Jiujiang Public Transport Group Charging Station



Guizhou Tongren Bus Charging Station

Taxi Centralized Charging Station



A public charging station in Yangquan, Shanxi

The modified site was completed in June 2019. It mainly provides charging services for taxis/net-hailing cars in Mengxian County, Shanxi. The charging station is equipped with 30 120KW integrated DC charging piles. The charging mode uses card charging and scanning charging. Our company provides charging services for this station. Provide overall site construction plan, equipment supply and operation and maintenance services.



Taiyuan Binxi Industrial Park Charging Station

The taxi centralized charging station is equipped with 35 120KW integrated DC charging piles and 11 84KW double gun AC piles. It was completed and used in August 2016.

Some of the above cases are to protect customer privacy. It is inconvenient to disclose customer names in promotional materials, please understand!

Logistics Park Application



JD (Beijing Majuqiao) Logistics Park Charging Station

The site was completed and put into use in October 2018. The charging station is equipped with 60 90KW charging piles to provide daily charging and fast recharge services for 500 JD Logistics vehicles to ensure the normal operation of JD Logistics, especially on major festivals each year. Such as the 618 year-end shopping festival, double eleven and other such charging stations have also undertaken important capacity guarantee work.



Inner Mongolia Innovative Energy Vehicle Charging Station

Power Plant Bridge Centralized Charging Station

Charging Stations For Agencies And Enterprises



China Satellite Communication Building Charging Station



Charging station of parking lot of Beijing Agricultural Vocational College



Parking lot of a provincial Tourism and Culture Department



Parking lot of a provincial petition bureau



China Aerospace Parking Lot DC Fast Charging Station



Charging station in parking lot of a military research institute in Beijing

Some of the above cases are to protect customer privacy. It is inconvenient to disclose customer names in promotional materials, please understand!

Cooperation project application scenario

Charging Stations For Agencies And Enterprises



Hunan Provincial Government Hospital

Hunan Provincial Government Compound



Beijing Huadian Property Underground Parking Lot (Plastic Exchange Pile)

Beijing Anningzhuang East Road Community



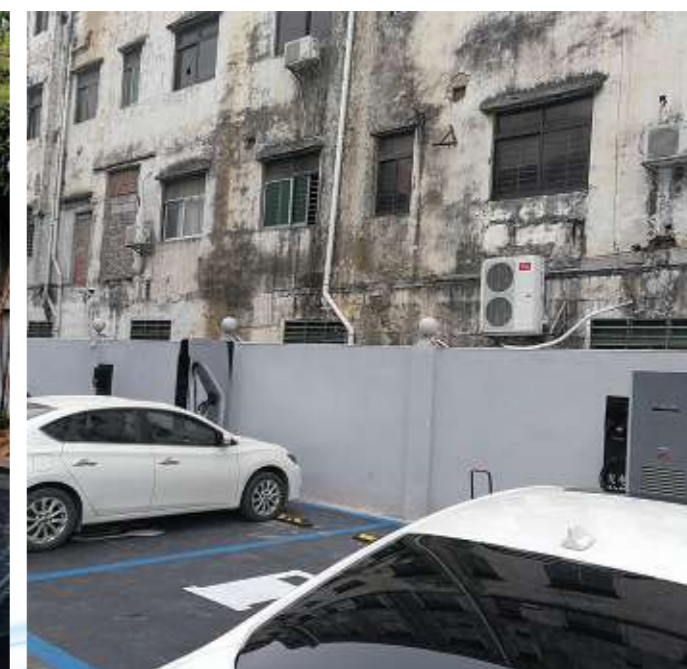
Beijing Oriental Guoxin Building

TCL Huaxing Optoelectronics R&D Building Parking Lot

Charging pile equipment customization and processing



Charging network of a high-end automobile brand dealership



For a high-end automobile brand with a national layout, our company participates in the construction and operation of the national charging network project

Some of the above cases are to protect customer privacy. It is inconvenient to disclose customer names in promotional materials, please understand!

Cooperation project application scenario

CBD application scenario



Cell/charging station application scenario



Shenzhen Baoan Yunding Home Project

Hubei Shuyang Guobangjia World Phase II Project

Shenzhen Futian Investment Bank Building Project

Hunan Changsha Provincial Government Courtyard Project

Shenzhen Shiyuan Skyworth Industrial Park Project

Xian Weiyang District New Energy Exhibition Center Project

Shenzhen Yantian District Shanhai Homelands Project

Zhejiang Yinzhou District Project

Shenzhen Manshan Software Park Project

Beijing Jingdong Logistics Charging Station Project

Hunan Changsha City Investment Charging Pile Project

Beijing Fangshan District Agricultural Vocational West Road Charging Station Project